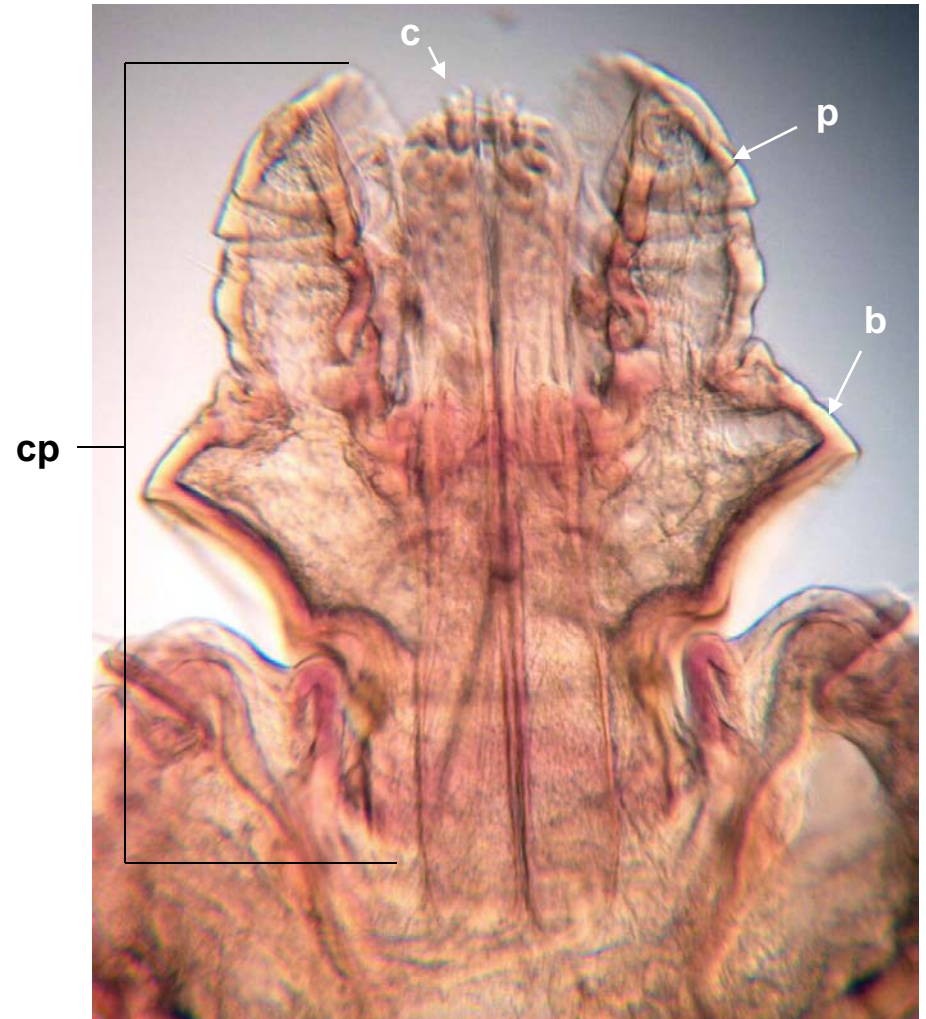
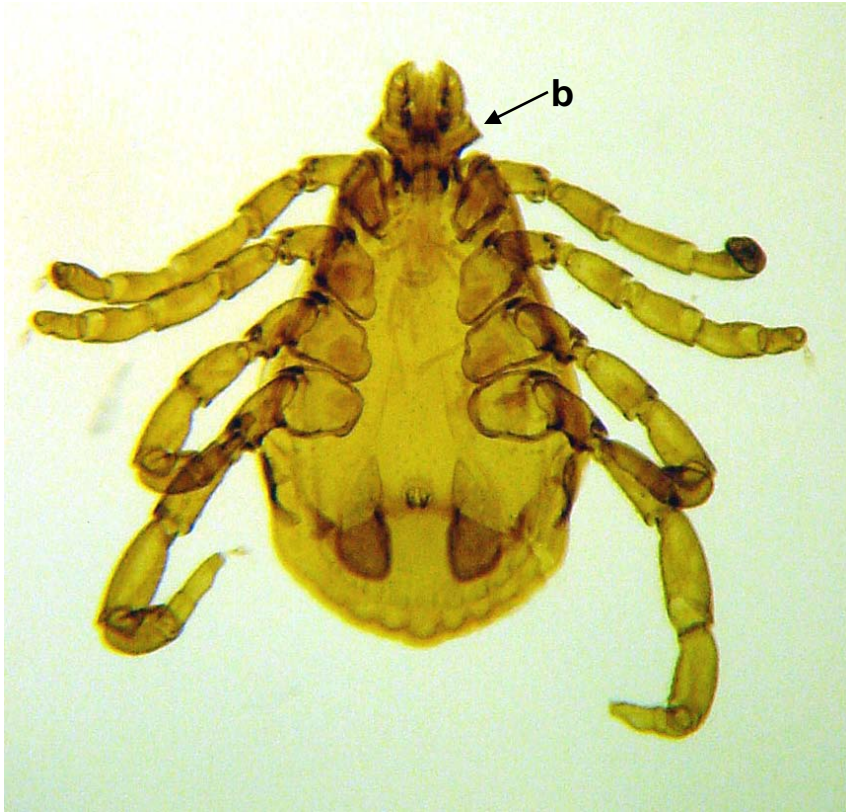


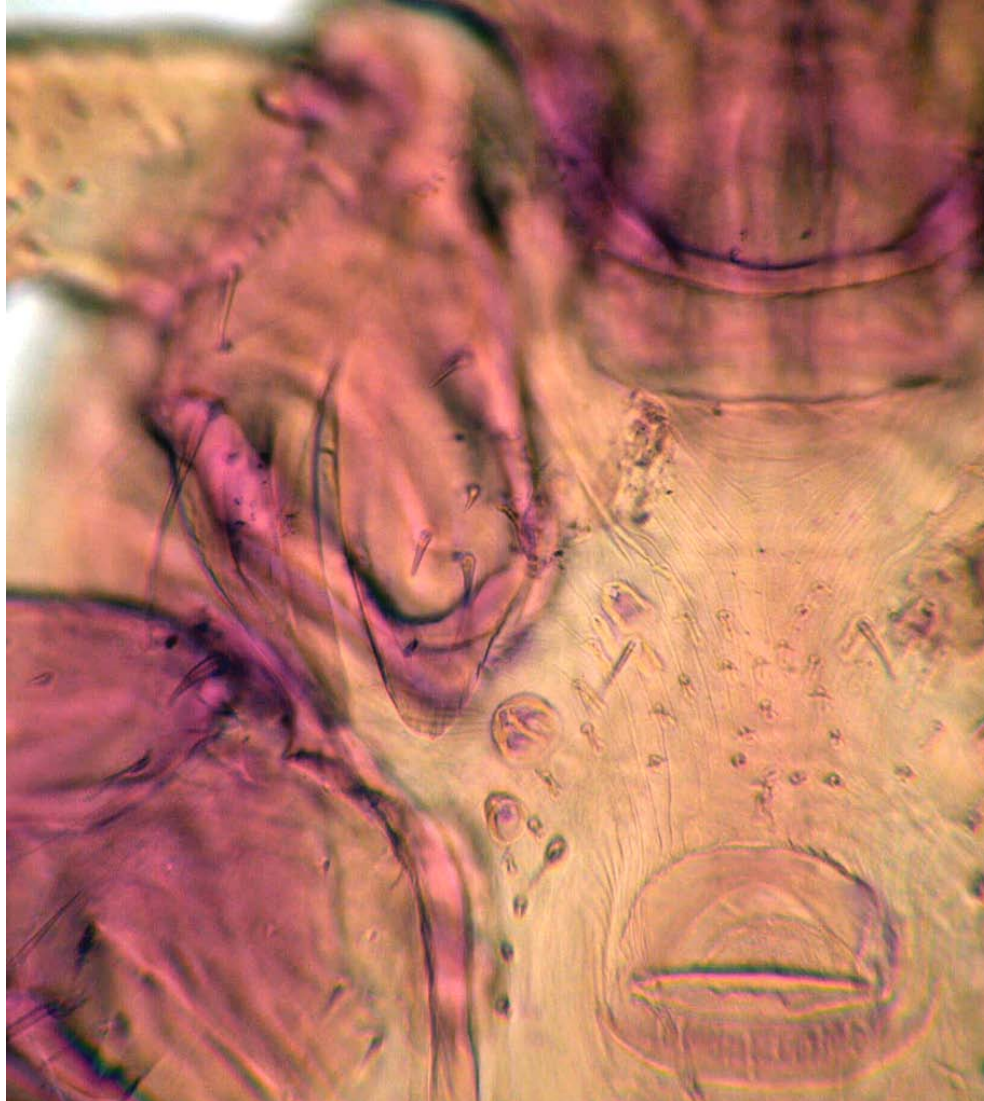
Rhipicephalus sanguineus: entire (left); mouth parts (right).

Legend: b, basis capitulum; c, chelicera; cp, capitulum; p, palp.

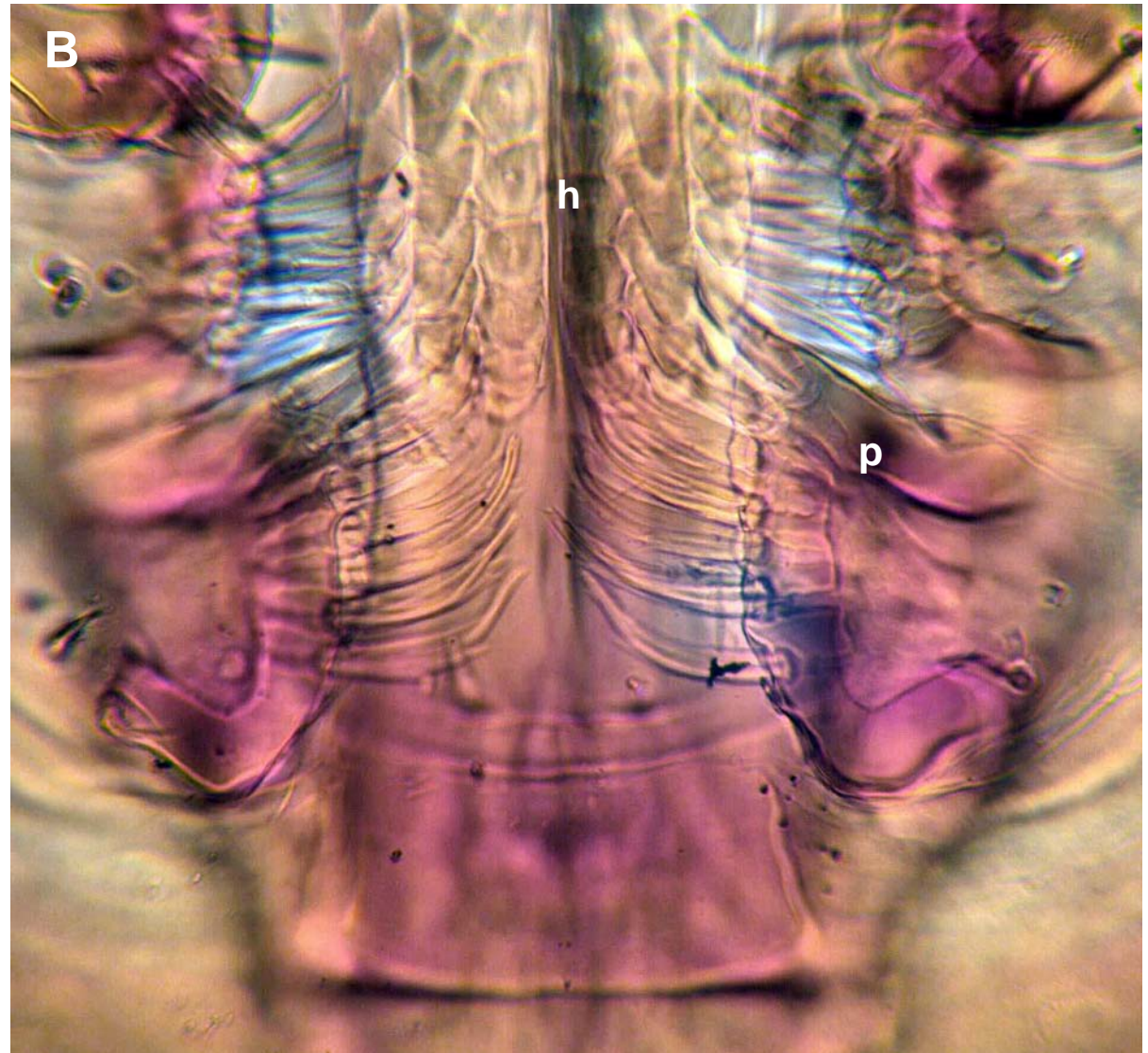
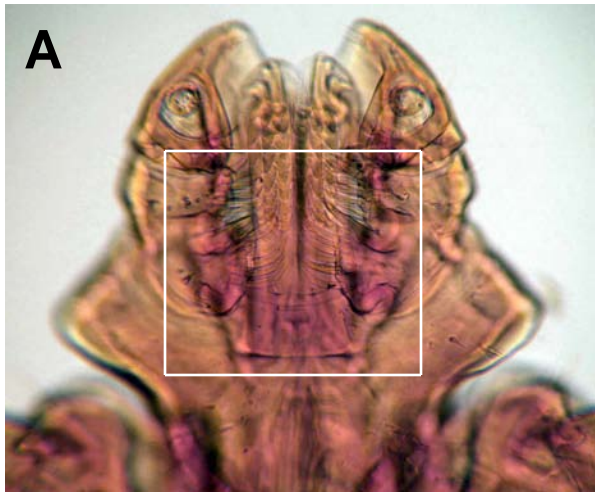
Note lateral extension of basis capitulum, characteristic of this genus.



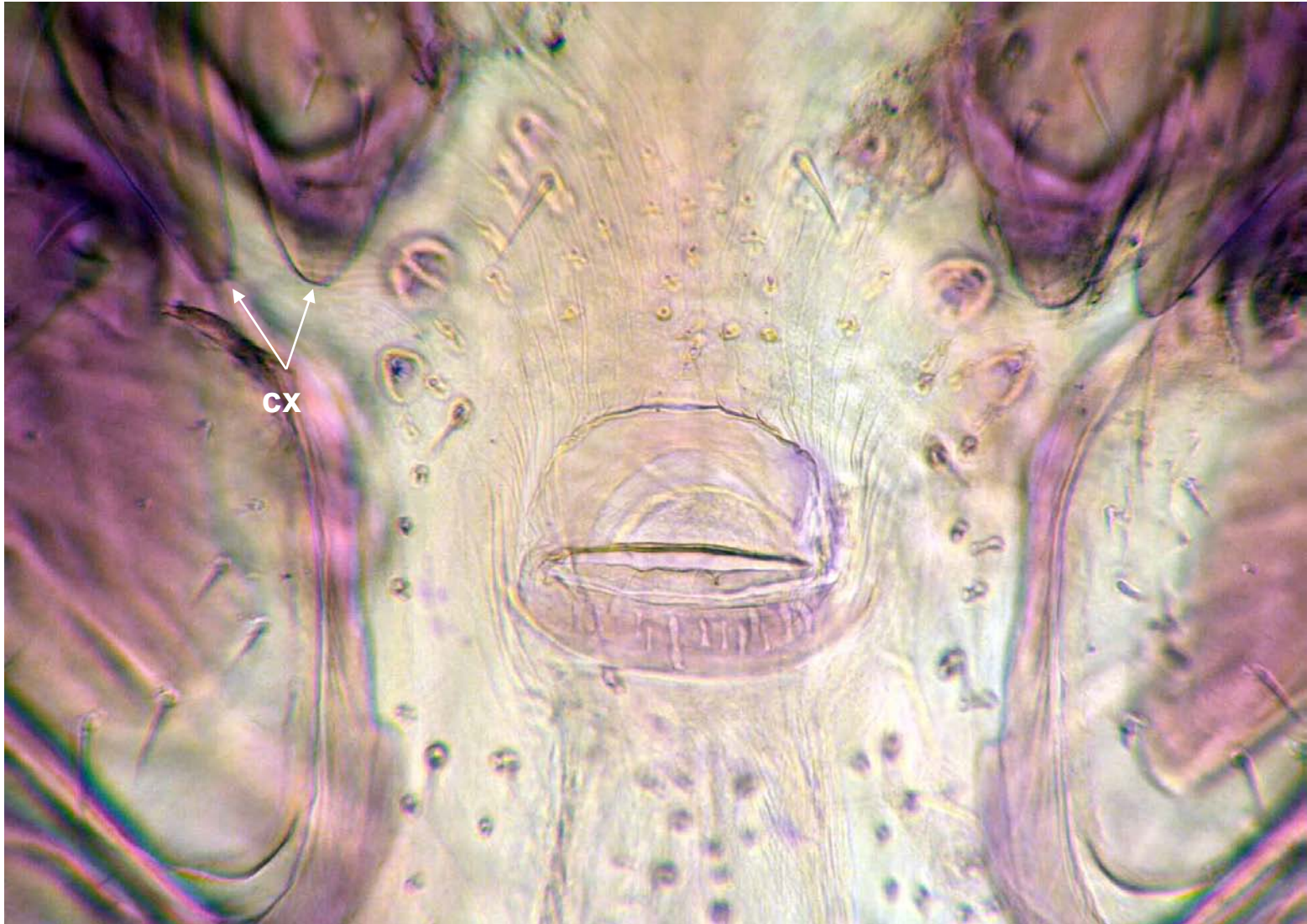
Rhipicephalus sanguineus: bifid coxa I.



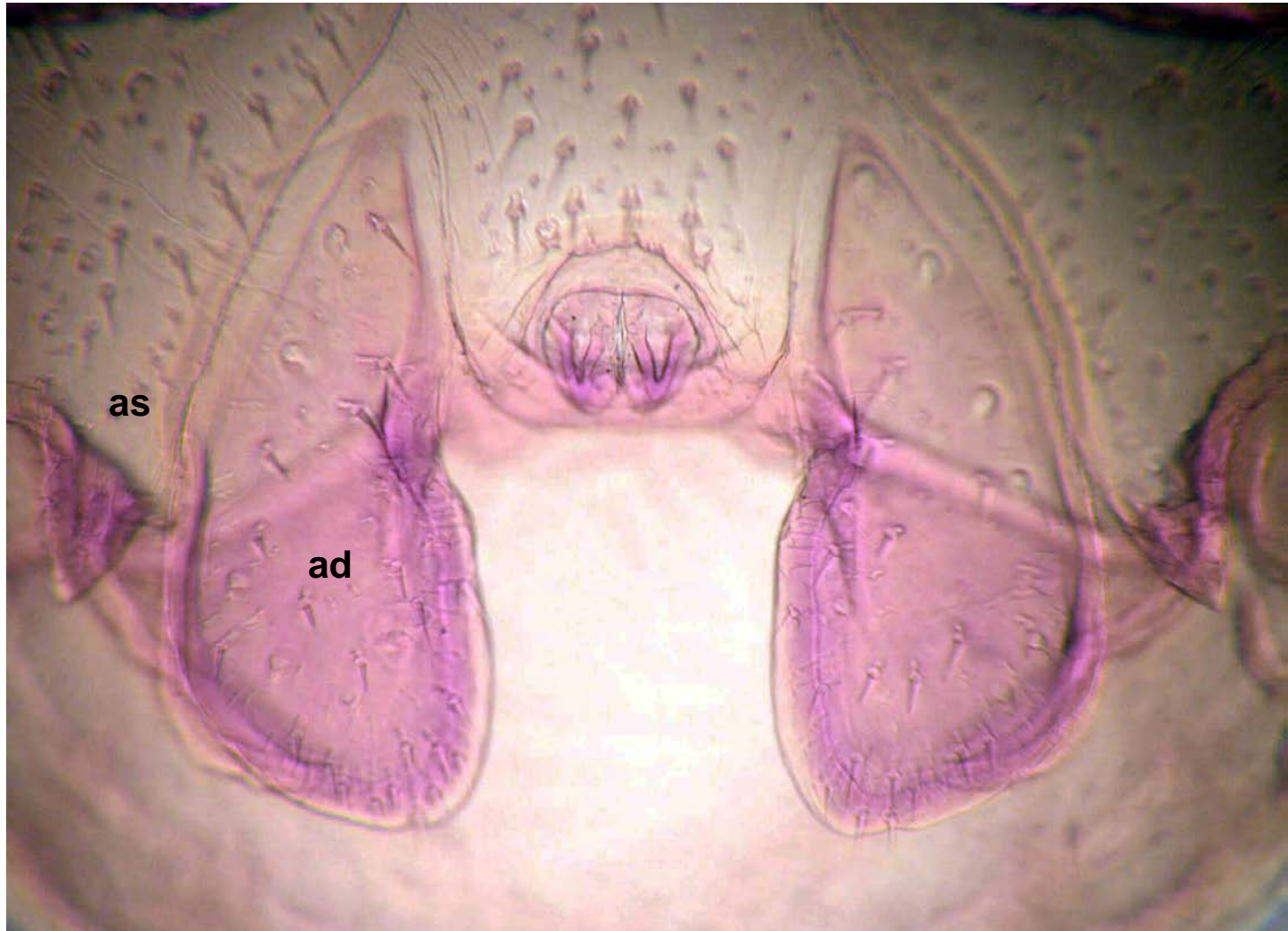
Rhipicephalus sanguineus; box in A enlarged in B. Note extensive spines projecting from palps (p) toward mid-line of hypostome (h).



Rhipicephalus sanguineus; gonopore (between coxae II).
Legend: cx, bifid coxa I.



Rhipicephalus sanguineus; anus. Legend: ad, adanal shield; as, accessory adanal shield (after Nuttal, 1911, Ticks: A Monograph of the Ixodoidea, Part II, p. 122; fide' Kettle, Medical and Veterinary Entomology).



Rhipicephalus sanguineus; mid-line of body from anus to gonopore (box in A enlarged in B). Legend: a, anus; ad, adanal shield; as, accessory adanal shield; IV, coxa IV; f, festoons; g, gonopore; gg, genital groove; m, median plate.

